

\$650,000 - 147, 1000 Glenhaven Way, Cochrane

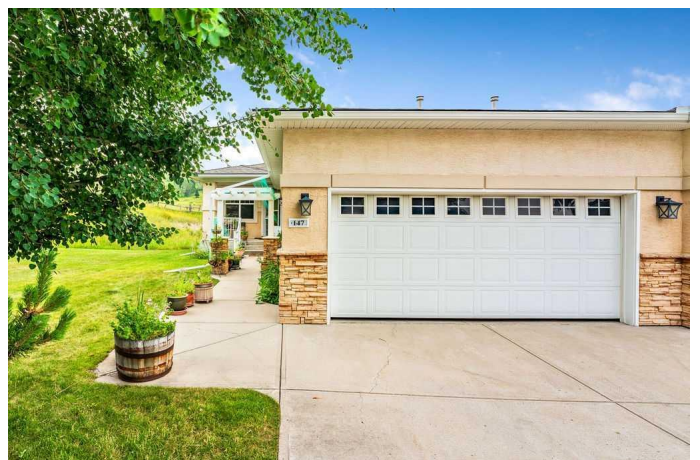
MLS® #A2174877

\$650,000

2 Bedroom, 2.00 Bathroom, 1,594 sqft
Residential on 0.39 Acres

GlenEagles, Cochrane, Alberta

Welcome Home!!! If your looking for Spectacular views and privacy this is the property for you!! This 1594 sq ft walk out bungalow is located in Glenhaven in the sought after community of Glen Eagles. Glenhaven is nestled at the beginning of a large valley, the views are amazing as you can see for miles, and its tranquility is amazing. This property is the end unit and is the only one with a privacy wall. No neighbours on the one side nor behind, This has to be the best lot in Glenhaven. This home has been well cared for by the one and only owner. When you enter the home you come into a large entranceway with the formal dining room to your right. The main floor then opens up to the large kitchen and living room. The kitchen has a gas stove, ample cupboard and counter space, pantry, breakfast nook, and stainless steel appliances. Great spot to host a gathering. The living room has large windows to enjoy the amazing valley views and let the natural light in, and you can cuddle up by the fire on those cold winter days. Walk down the Hall to the large Primary bedroom, which has a walk in closet and a 5 piece ensuite!! There is another bedroom that you could easily use as a den or office. The main floor is capped off with. a powder room and a laundry room. Whern you walk through the laundry room you gain access to the large double attached garage. Head downstairs to the open walkout basement. Perfect for you to design this to your liking!! roughed in for a bathroom and a



fireplace, insulated frost walls with the electrical installed, its ready to be finished off! Huge windows let the light in and the views!!! Step outside onto the deck, which has a fresh facelift with brand new duradek and just take in the valley views and the serenity of the area. Under the deck is another patio, if its rainy out or just want some shade its a great place to hang out. This home has had many upgrades done - Phantom screens, Led lighting, heavy shelving in the garage, Front screen door, and hot water tank was replaced in 2015. Don't miss out on this amazing home, come and see!!

Built in 2002

Essential Information

MLS® #	A2174877
Price	\$650,000
Bedrooms	2
Bathrooms	2.00
Full Baths	1
Half Baths	1
Square Footage	1,594
Acres	0.39
Year Built	2002
Type	Residential
Sub-Type	Semi Detached
Style	Bungalow, Side by Side
Status	Active

Community Information

Address	147, 1000 Glenhaven Way
Subdivision	GlenEagles
City	Cochrane
County	Rocky View County
Province	Alberta
Postal Code	T4C 1Y9

Amenities

Amenities	Snow Removal
Parking Spaces	4
Parking	Double Garage Attached, Driveway
# of Garages	2

Interior

Interior Features	Closet Organizers, Double Vanity, French Door, No Smoking Home, Open Floorplan, Pantry, Walk-In Closet(s)
Appliances	Dishwasher, Dryer, Garage Control(s), Gas Stove, Refrigerator, Range Hood, Washer, Window Coverings
Heating	Forced Air, Fireplace(s)
Cooling	None
Fireplace	Yes
# of Fireplaces	1
Fireplaces	Blower Fan, Gas, Living Room, Mantle, Tile
Has Basement	Yes
Basement	Full, Unfinished, Walk-Out

Exterior

Exterior Features	Private Entrance, Private Yard
Lot Description	Backs on to Park/Green Space, Corner Lot, Front Yard, No Neighbours Behind, Private, See Remarks, Street Lighting, Views
Roof	Asphalt Shingle
Construction	Stone, Stucco, Wood Frame
Foundation	Poured Concrete

Additional Information

Date Listed	October 23rd, 2024
Days on Market	183
Zoning	R-MX
HOA Fees	125
HOA Fees Freq.	ANN

Listing Details

Listing Office	CIR Realty
----------------	------------

Data is supplied by Pillar 9â„¢ MLSÂ® System. Pillar 9â„¢ is the owner of the copyright in its MLSÂ® System. Data is deemed reliable but is not guaranteed accurate by Pillar 9â„¢. The trademarks MLSÂ®, Multiple Listing ServiceÂ® and the associated logos are owned by The Canadian Real Estate Association (CREA) and identify the quality of services provided by real estate professionals who are members of CREA. Used under license.