

\$1,325,000 - 214 Lake Erie Place Se, Calgary

MLS® #A2187853

\$1,325,000

4 Bedroom, 3.00 Bathroom, 1,441 sqft

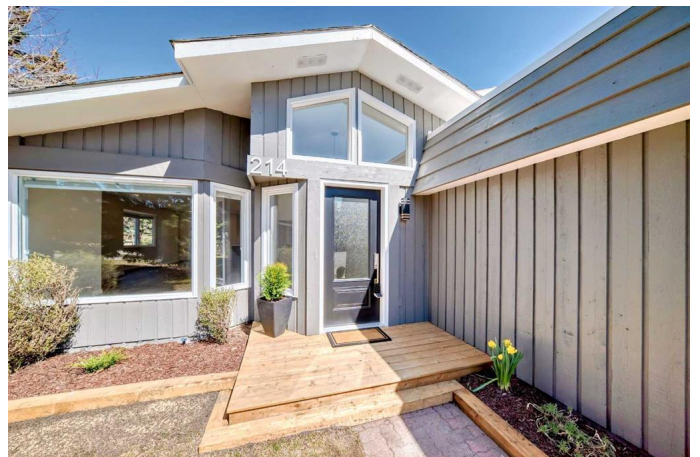
Residential on 0.20 Acres

Lake Bonavista, Calgary, Alberta

RENOVATED & REFRESHED 4 Level split in LAKE BONAVISTA--tucked into the back end of a QUIET CUL-DE-SAC, with a huge 800m² PIE SHAPED TREED LOT! This location is guarded by a tot-park at the block entrance and is walking distance to schools (Sam Livingston & Nickel) and the NORTH ENTRANCE TO THE LAKE!

PROFESSIONALLY RENOVATED - The entire main floor has been OPENED UP and a NEW ISLAND KITCHEN, CABINETRY & stainless APPLIANCES INSTALLED (Executive Millwork). The primary BEDROOM now has a NEW coveted 3pc ENSUITE. All new flooring (Devine Luxury Vinyl+tile), fresh paint inside and out, NEW GRANITE COUNTERS, all new bathrooms, new lighting, new 100 amp panel (Bertram Electric --yes, its pigtailed to code), NEW WINDOW COVERINGS, NEW front and back decks, NEW doors throughout (inside and out) and all new casing and baseboards. Just over 2400 ft² of living space, 4 Bdrms (3+1) + den, double attached garage (23'5"x20'4"), 2 full baths, 1 half bath, completely opened up living area, lower Family Room and Games Room. The generous lot size means new buyers can build an extra garage in the back, have a full size garden or maybe build a future laneway home? Come by the OPEN HOUSE THIS SAT/SUN (MAY 3/4TH) 2-4PM. Floorplans in supplements.

Built in 1971



Essential Information

| | |
|----------------|---------------|
| MLS® # | A2187853 |
| Price | \$1,325,000 |
| Bedrooms | 4 |
| Bathrooms | 3.00 |
| Full Baths | 2 |
| Half Baths | 1 |
| Square Footage | 1,441 |
| Acres | 0.20 |
| Year Built | 1971 |
| Type | Residential |
| Sub-Type | Detached |
| Style | 4 Level Split |
| Status | Active |

Community Information

| | |
|-------------|------------------------|
| Address | 214 Lake Erie Place Se |
| Subdivision | Lake Bonavista |
| City | Calgary |
| County | Calgary |
| Province | Alberta |
| Postal Code | T2J 2L5 |

Amenities

| | |
|----------------|---|
| Amenities | Beach Access, Boating, Clubhouse, Park, Parking, Picnic Area, Playground, Racquet Courts, Recreation Facilities |
| Parking Spaces | 4 |
| Parking | Double Garage Attached |
| # of Garages | 2 |

Interior

| | |
|-------------------|---|
| Interior Features | Bookcases, Built-in Features, No Animal Home, No Smoking Home |
| Appliances | Dishwasher, Dryer, Range Hood, Refrigerator, Stove(s), Washer, Window Coverings |
| Heating | Fireplace(s), Forced Air, Natural Gas |
| Cooling | None |
| Fireplace | Yes |
| # of Fireplaces | 1 |
| Fireplaces | Brick Facing, Family Room, Gas |

| | |
|--------------|----------------|
| Has Basement | Yes |
| Basement | Finished, Full |

Exterior

| | |
|-------------------|--|
| Exterior Features | Playground |
| Lot Description | Back Lane, Back Yard, Cul-De-Sac, Garden, Landscaped, Lawn, Level, Pie Shaped Lot, Street Lighting |
| Roof | Asphalt Shingle |
| Construction | Wood Frame, Wood Siding |
| Foundation | Poured Concrete |

Additional Information

| | |
|----------------|------------------|
| Date Listed | April 26th, 2025 |
| Days on Market | 9 |
| Zoning | R-CG |
| HOA Fees | 410 |
| HOA Fees Freq. | ANN |

Listing Details

| | |
|----------------|-----------------------------|
| Listing Office | RE/MAX House of Real Estate |
|----------------|-----------------------------|

Data is supplied by Pillar 9â„¢ MLSÂ® System. Pillar 9â„¢ is the owner of the copyright in its MLSÂ® System. Data is deemed reliable but is not guaranteed accurate by Pillar 9â„¢. The trademarks MLSÂ®, Multiple Listing ServiceÂ® and the associated logos are owned by The Canadian Real Estate Association (CREA) and identify the quality of services provided by real estate professionals who are members of CREA. Used under license.