

\$1,399,500 - 21 Pinewood Crescent, Canmore

MLS® #A2199439

\$1,399,500

4 Bedroom, 3.00 Bathroom, 1,784 sqft
Residential on 0.15 Acres

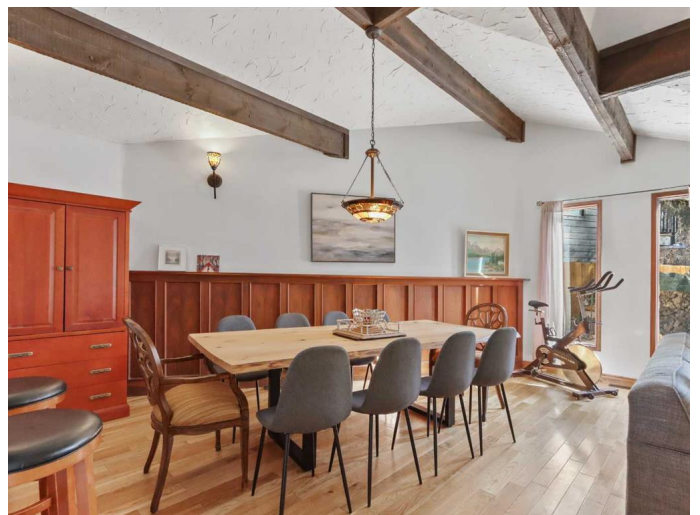
Town Centre_Canmore, Canmore, Alberta

A charming bungalow nestled in the heart of Canmore. This 1,784 sqft, 4-bedroom, 3-bath mountain home is situated on a 6,738 sqft pie lot. Featuring two primary bedrooms with ensuites, this home is ideal for guests or extended family. The large entryway leads to an open floor plan that encompasses a spacious living and dining area, and a kitchen with stainless steel appliances, granite countertops, and an eating bar. The mudroom or flex room opens to a generous back deck and treed yard, creating a true oasis with a 6-person hot tub, multiple sitting areas, and a serene fire pit. Additional highlights include hardwood floors, solid doors and trim, a wood stove in the living room, a gas fireplace in the primary retreat, and a large shed, perfect for tuning and storing all your outdoor gear.

Built in 1982

Essential Information

MLS® #	A2199439
Price	\$1,399,500
Bedrooms	4
Bathrooms	3.00
Full Baths	3
Square Footage	1,784
Acres	0.15
Year Built	1982
Type	Residential



Sub-Type	Detached
Style	Bungalow
Status	Active

Community Information

Address	21 Pinewood Crescent
Subdivision	Town Centre_Canmore
City	Canmore
County	Bighorn No. 8, M.D. of
Province	Alberta
Postal Code	T1W1P8

Amenities

Parking Spaces	3
Parking	Parking Pad, Gravel Driveway, Plug-In

Interior

Interior Features	High Ceilings
Appliances	Dishwasher, Dryer, Refrigerator, Stove(s), Washer, Window Coverings
Heating	Forced Air, Natural Gas, Wood Stove
Cooling	None
Fireplace	Yes
# of Fireplaces	2
Fireplaces	Gas, Living Room, Master Bedroom, Wood Burning Stove
Has Basement	Yes
Basement	None, Crawl Space

Exterior

Exterior Features	Balcony, Fire Pit, Private Yard
Lot Description	Back Yard, Garden, Low Maintenance Landscape, Pie Shaped Lot, See Remarks, Treed
Roof	Metal
Construction	Wood Siding
Foundation	Wood

Additional Information

Date Listed	March 25th, 2025
Days on Market	14
Zoning	R1

Listing Details

Listing Office ROYAL LEPAGE SOLUTIONS

Data is supplied by Pillar 9â,,ç MLSÂ® System. Pillar 9â,,ç is the owner of the copyright in its MLSÂ® System. Data is deemed reliable but is not guaranteed accurate by Pillar 9â,,ç. The trademarks MLSÂ®, Multiple Listing ServiceÂ® and the associated logos are owned by The Canadian Real Estate Association (CREA) and identify the quality of services provided by real estate professionals who are members of CREA. Used under license.