

\$379,900 - 306, 605 17 Avenue Nw, Calgary

MLS® #A2211069

\$379,900

2 Bedroom, 2.00 Bathroom, 898 sqft
Residential on 0.00 Acres

Mount Pleasant, Calgary, Alberta

Welcome to your dream condo in the heart of Mount Pleasant. This stunning 2-bedroom, 2-bathroom unit offers the perfect blend of urban convenience and comfortable living. Imagine being steps away from a diverse selection of restaurants and grocery stores, with SAIT, UofC, and Foothills Hospital just a short distance away. Plus, downtown is easily accessible, making commute a breeze. The place is flooded with sunlight thanks to the south-facing windows, offering beautiful views of the downtown skyline. The apartment

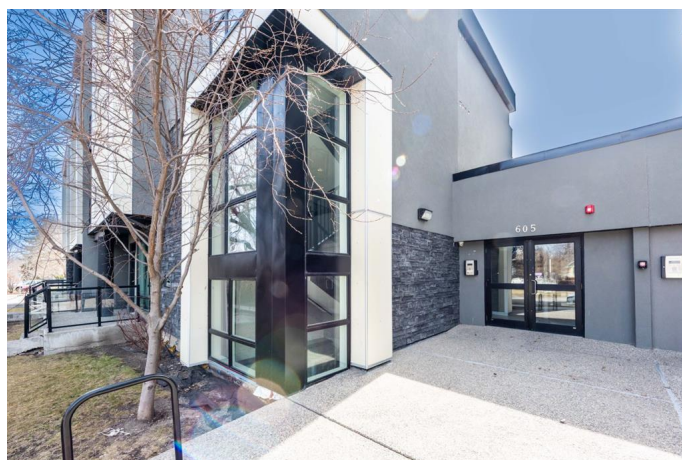
Built in 2015

Essential Information

MLS® #	A2211069
Price	\$379,900
Bedrooms	2
Bathrooms	2.00
Full Baths	2
Square Footage	898
Acres	0.00
Year Built	2015
Type	Residential
Sub-Type	Apartment
Style	Single Level Unit
Status	Active

Community Information

Address 306, 605 17 Avenue Nw



Subdivision	Mount Pleasant
City	Calgary
County	Calgary
Province	Alberta
Postal Code	T2M 0N6

Amenities

Amenities	Elevator(s), Secured Parking, Visitor Parking
Parking Spaces	1
Parking	Underground

Interior

Interior Features	Open Floorplan
Appliances	Dishwasher, Electric Range, Microwave Hood Fan, Refrigerator, Washer/Dryer Stacked, Window Coverings
Heating	Boiler
Cooling	None
# of Stories	4

Exterior

Exterior Features	Balcony, BBQ gas line, Courtyard
Construction	Brick, Stucco, Wood Frame

Additional Information

Date Listed	April 11th, 2025
Days on Market	3
Zoning	M-C2

Listing Details

Listing Office	Royal LePage METRO
----------------	--------------------

Data is supplied by Pillar 9â„¢ MLSÂ® System. Pillar 9â„¢ is the owner of the copyright in its MLSÂ® System. Data is deemed reliable but is not guaranteed accurate by Pillar 9â„¢. The trademarks MLSÂ®, Multiple Listing ServiceÂ® and the associated logos are owned by The Canadian Real Estate Association (CREA) and identify the quality of services provided by real estate professionals who are members of CREA. Used under license.