

\$369,900 - 3212, 6 Merganser Drive, Chestermere

MLS® #A2217483

\$369,900

2 Bedroom, 2.00 Bathroom, 685 sqft
Residential on 0.00 Acres

Chelsea_CH, Chestermere, Alberta

Welcome to this beautifully crafted 2-bedroom, 2-bathroom condo with a den and two titled parking stalls, located in the vibrant lake community of Chelsea, Chestermere. Built by TRUMAN, this home blends modern design, functionality, and luxuryâ€”perfect for first-time buyers, downsizers, or investors.

Enjoy the best of lake living just minutes from Chestermere Lake with beach access, boat launch, scenic walking trails, playgrounds, and parks. Daily conveniences are close by with easy access to Chestermere Station and Chestermere Crossing, where youâ€™ll find shopping, restaurants, and essential services.

Inside, the open-concept layout features a flexible den ideal for a home office, and premium finishes throughout. Youâ€™ll love the luxury vinyl plank flooring, soaring ceilings, and chef-inspired kitchenâ€”complete with full-height cabinetry, soft-close drawers, quartz countertops, stainless steel appliances, and a practical pantry. The eat-up island is perfect for casual meals or entertaining guests.

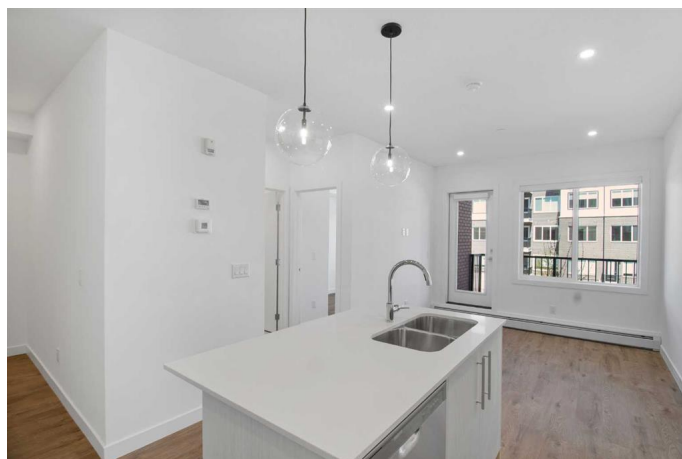
The spacious primary bedroom offers a walk-through closet and private 3-piece ensuite. A second bedroom, 4-piece main bath, and in-suite laundry add to the thoughtful layout.

Lockwood residents also enjoy exclusive access to a fully equipped fitness centre, an



6-3212 Merganser Dr W, Chestermere, AB

Main Floor Interior Area 685.23 sq ft



inviting owners' lounge, and convenient bike storage for active living.

Bright, stylish, and move-in ready—this home is your chance to embrace the small town living feel but only minutes from Calgary.

Live better. Live Chelsea.

Built in 2025

Essential Information

| | |
|----------------|-------------------|
| MLS® # | A2217483 |
| Price | \$369,900 |
| Bedrooms | 2 |
| Bathrooms | 2.00 |
| Full Baths | 2 |
| Square Footage | 685 |
| Acres | 0.00 |
| Year Built | 2025 |
| Type | Residential |
| Sub-Type | Apartment |
| Style | Single Level Unit |
| Status | Active |

Community Information

| | |
|-------------|-------------------------|
| Address | 3212, 6 Merganser Drive |
| Subdivision | Chelsea_CH |
| City | Chestermere |
| County | Chestermere |
| Province | Alberta |
| Postal Code | T1X2Y2 |

Amenities

| | |
|----------------|--|
| Amenities | Elevator(s), Fitness Center, Parking, Beach Access, Bicycle Storage, Boating, Dog Park |
| Parking Spaces | 2 |
| Parking | Stall |

Interior

| | |
|-------------------|--|
| Interior Features | Kitchen Island, Open Floorplan, Walk-In Closet(s) |
| Appliances | Dishwasher, Dryer, Electric Stove, Microwave, Microwave Hood Fan, Refrigerator, Washer |
| Heating | Baseboard, Hot Water |
| Cooling | Sep. HVAC Units |
| # of Stories | 4 |

Exterior

| | |
|-------------------|----------------------|
| Exterior Features | Balcony, Courtyard |
| Roof | Membrane |
| Construction | Concrete, Wood Frame |
| Foundation | Poured Concrete |

Additional Information

| | |
|----------------|---------------|
| Date Listed | May 3rd, 2025 |
| Days on Market | 21 |
| Zoning | Multi Family |
| HOA Fees Freq. | MON |

Listing Details

| | |
|----------------|---------------------------------|
| Listing Office | Stonemere Real Estate Solutions |
|----------------|---------------------------------|

Data is supplied by Pillar 9â„¢ MLS® System. Pillar 9â„¢ is the owner of the copyright in its MLS® System. Data is deemed reliable but is not guaranteed accurate by Pillar 9â„¢. The trademarks MLS®, Multiple Listing Service® and the associated logos are owned by The Canadian Real Estate Association (CREA) and identify the quality of services provided by real estate professionals who are members of CREA. Used under license.