

\$749,900 - 956 Parkvalley Way Se, Calgary

MLS® #A2233469

\$749,900

4 Bedroom, 4.00 Bathroom, 1,266 sqft
Residential on 0.14 Acres

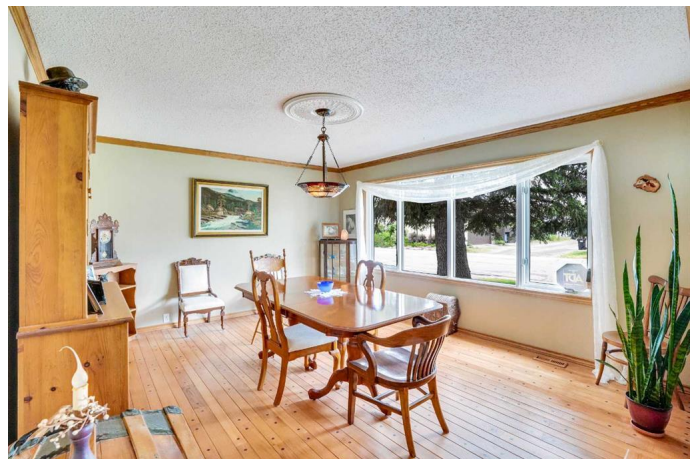
Parkland, Calgary, Alberta

*****OPEN HOUSE*** 10:30am - 4pm SUNDAY**

JULY 27!! Welcome to this incredibly well-cared-for 1977 bungalow, perfectly situated on one of Parkland's most sought-after, quiet streets—literally just a couple hundred feet from a direct entrance to Fish Creek Park. As one of the largest urban parks in North America, Fish Creek Park spans over 80 square km's of scenic walking and biking trails, picnic areas, and abundant wildlife, offering an unbeatable outdoor lifestyle right at your doorstep. This unique property is tucked on a 56' x 110' corner lot with a paved back lane providing access from both the rear and side, meaning you only have one direct neighbour—a rare find that adds both privacy and convenience in this already exceptional location.

The main floor features beautiful hardwood flooring and a functional, open layout. The sunken living room is anchored by a striking stone chimney and wood-burning fireplace, creating a warm, inviting space to relax or entertain. The wide-open kitchen connects seamlessly to the living area, keeping the heart of the home bright, open, and social.

At the front, a spacious formal dining room offers flexibility as a large home office or additional sitting area. Three well-sized bedrooms and 2.5 baths complete the main level, all meticulously maintained and ready to move in or personalize.



Outside, the large backyard is built for both relaxation and possibility. Enjoy the expansive patio—partially covered for year-round comfort—a concrete hot tub pad with 240V electrical rough-in, and still plenty of space to park your RV or even add a second garage. The oversized double detached garage offers ample storage for vehicles, tools, or hobbies.

Downstairs, the fully finished basement delivers a fun and functional space, featuring a full bar, room for a pool table, a games or media area, a spacious fourth bedroom, and a three-piece bathroom with a steam shower—ideal for guests or extended family stays.

With direct access to Park 96, great schools nearby, and easy commutes via Deerfoot or Macleod Trail, this home offers the perfect blend of comfort, character, and community. Homes on this street rarely come up—don't miss your chance to live in this truly special location. Book your private showing today!

Built in 1975

Essential Information

MLS® #	A2233469
Price	\$749,900
Bedrooms	4
Bathrooms	4.00
Full Baths	3
Half Baths	1
Square Footage	1,266
Acres	0.14
Year Built	1975
Type	Residential
Sub-Type	Detached

Style Bungalow
Status Active

Community Information

Address 956 Parkvalley Way Se
Subdivision Parkland
City Calgary
County Calgary
Province Alberta
Postal Code T2J4W2

Amenities

Parking Spaces 2
Parking Double Garage Detached
of Garages 2

Interior

Interior Features Bar, Built-in Features, Ceiling Fan(s), Closet Organizers, Open Floorplan, See Remarks, Storage, Walk-In Closet(s)
Appliances Dishwasher, Microwave Hood Fan, Refrigerator, Stove(s), Washer/Dryer, Window Coverings
Heating Forced Air, Natural Gas
Cooling None
Fireplace Yes
of Fireplaces 1
Fireplaces Living Room, Stone, Tile, Wood Burning, Raised Hearth
Has Basement Yes
Basement Full, Partially Finished

Exterior

Exterior Features Private Yard, Storage, Rain Barrel/Cistern(s)
Lot Description Back Lane, Back Yard, Corner Lot, Few Trees, Landscaped
Roof Asphalt Shingle
Construction Brick, Wood Siding
Foundation Poured Concrete

Additional Information

Date Listed June 24th, 2025
Days on Market 78

Zoning R-CG

Listing Details

Listing Office eXp Realty

Data is supplied by Pillar 9â„¢ MLSÂ® System. Pillar 9â„¢ is the owner of the copyright in its MLSÂ® System. Data is deemed reliable but is not guaranteed accurate by Pillar 9â„¢. The trademarks MLSÂ®, Multiple Listing ServiceÂ® and the associated logos are owned by The Canadian Real Estate Association (CREA) and identify the quality of services provided by real estate professionals who are members of CREA. Used under license.