

\$749,900 - 1043 Fowler Road Sw, Airdrie

MLS® #A2236081

\$749,900

4 Bedroom, 3.00 Bathroom, 2,121 sqft

Residential on 0.11 Acres

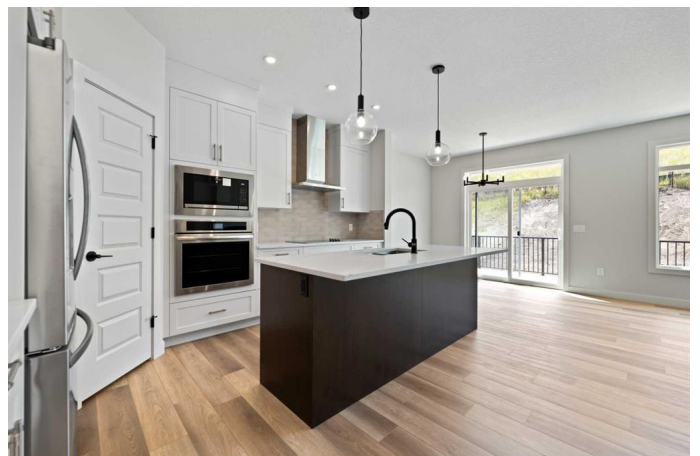
Key Ranch, Airdrie, Alberta

Welcome to the brand new community of Key Ranch! The Brand new home built by Prominent Homes is a two-story with 4 Bedrooms and 3 Bathrooms! The Main Floor is Open concept and features a office/den which is perfect for working from home plus a full bathroom on the main floor with a Bathtub/shower. There is also a chic kitchen with Built-in Oven and Microwave and a nice size dining room with a family room that opens up to a full length Deck that backs onto Greenspace! The upper floor has 4 Bedrooms including a primary bedroom with a 5 piece ensuite and laundry room. The basement has a Separate Entrance and is ready for our personal touch. Call to book your private showing today!

Built in 2025

Essential Information

| | |
|----------------|-------------|
| MLS® # | A2236081 |
| Price | \$749,900 |
| Bedrooms | 4 |
| Bathrooms | 3.00 |
| Full Baths | 3 |
| Square Footage | 2,121 |
| Acres | 0.11 |
| Year Built | 2025 |
| Type | Residential |
| Sub-Type | Detached |



| | |
|--------|----------|
| Style | 2 Storey |
| Status | Active |

Community Information

| | |
|-------------|---------------------|
| Address | 1043 Fowler Road Sw |
| Subdivision | Key Ranch |
| City | Airdrie |
| County | Airdrie |
| Province | Alberta |
| Postal Code | T4B0B7 |

Amenities

| | |
|----------------|------------------------|
| Parking Spaces | 4 |
| Parking | Double Garage Attached |
| # of Garages | 2 |

Interior

| | |
|-------------------|--|
| Interior Features | Double Vanity, Kitchen Island, No Animal Home, No Smoking Home, Open Floorplan, Pantry, Separate Entrance, Walk-In Closet(s) |
| Appliances | Built-In Oven, Dishwasher, Dryer, Electric Cooktop, Microwave, Range Hood, Refrigerator, Washer |
| Heating | Forced Air |
| Cooling | None |
| Fireplace | Yes |
| # of Fireplaces | 1 |
| Fireplaces | Electric |
| Has Basement | Yes |
| Basement | Exterior Entry, Full, Unfinished |

Exterior

| | |
|-------------------|---|
| Exterior Features | Lighting |
| Lot Description | Backs on to Park/Green Space, Rectangular Lot |
| Roof | Asphalt Shingle |
| Construction | Wood Frame |
| Foundation | Poured Concrete |

Additional Information

| | |
|----------------|----------------|
| Date Listed | July 1st, 2025 |
| Days on Market | 5 |

ZoningR1-U

Listing Details

Listing OfficeeXp Realty

Data is supplied by Pillar 9â„¢ MLSÂ® System. Pillar 9â„¢ is the owner of the copyright in its MLSÂ® System. Data is deemed reliable but is not guaranteed accurate by Pillar 9â„¢. The trademarks MLSÂ®, Multiple Listing ServiceÂ® and the associated logos are owned by The Canadian Real Estate Association (CREA) and identify the quality of services provided by real estate professionals who are members of CREA. Used under license.