

\$1,010,000 - 5 1;18;34;nw, Longview

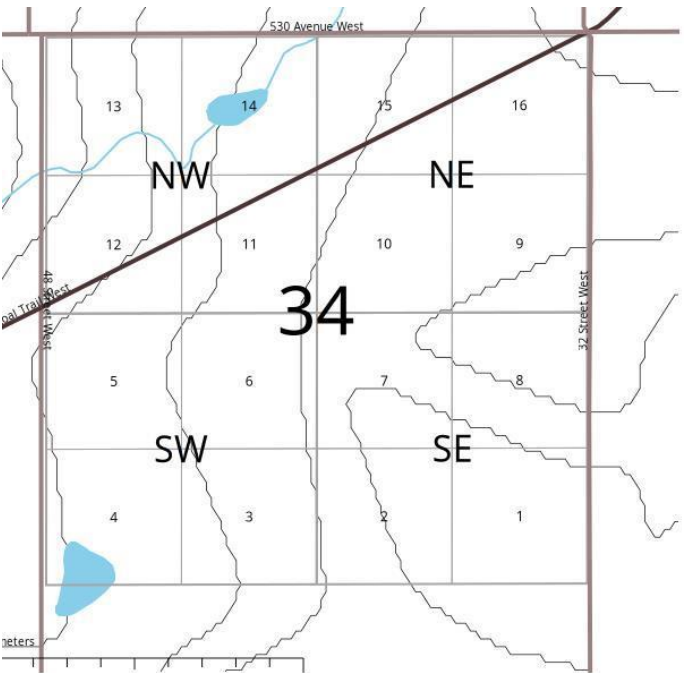
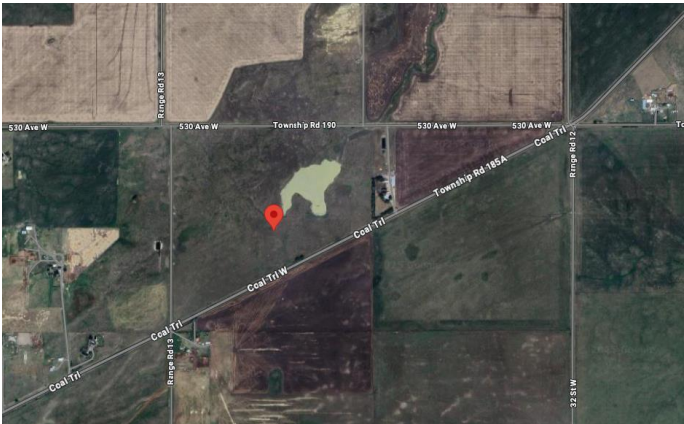
MLS® #A2237568

\$1,010,000

0 Bedroom, 0.00 Bathroom,
Land on 162.00 Acres

NONE, Longview, Alberta

Discover the potential of this stunning 162 acre parcel, ideally located just west of the iconic Six Corners intersection one of only two such spots in all of Canada! Situated in the scenic foothills, this southwest corner property offers spectacular mountain views!. The land can be highly productive with some effort barley yields an impressive average of 140 bushels per acre. Located just 10 minutes from High River and 18 minutes to Okotoks, this property offers a rare blend of agricultural opportunity and peaceful rural living. Whether you're looking to farm, raise cattle, or enjoy the wide open space, this parcel delivers unmatched potential!



Essential Information

MLS® #	A2237568
Price	\$1,010,000
Bathrooms	0.00
Acres	162.00
Type	Land
Sub-Type	Residential Land
Status	Active

Community Information

Address	5 1;18;34;nw
Subdivision	NONE
City	Longview
County	Foothills County

Province	Alberta
Postal Code	T0L 1H0

Additional Information

Date Listed	July 7th, 2025
Days on Market	11
Zoning	A

Listing Details

Listing Office	MaxWell Capital Realty
----------------	------------------------

Data is supplied by Pillar 9â„¢ MLS® System. Pillar 9â„¢ is the owner of the copyright in its MLS® System. Data is deemed reliable but is not guaranteed accurate by Pillar 9â„¢. The trademarks MLS®, Multiple Listing Service® and the associated logos are owned by The Canadian Real Estate Association (CREA) and identify the quality of services provided by real estate professionals who are members of CREA. Used under license.